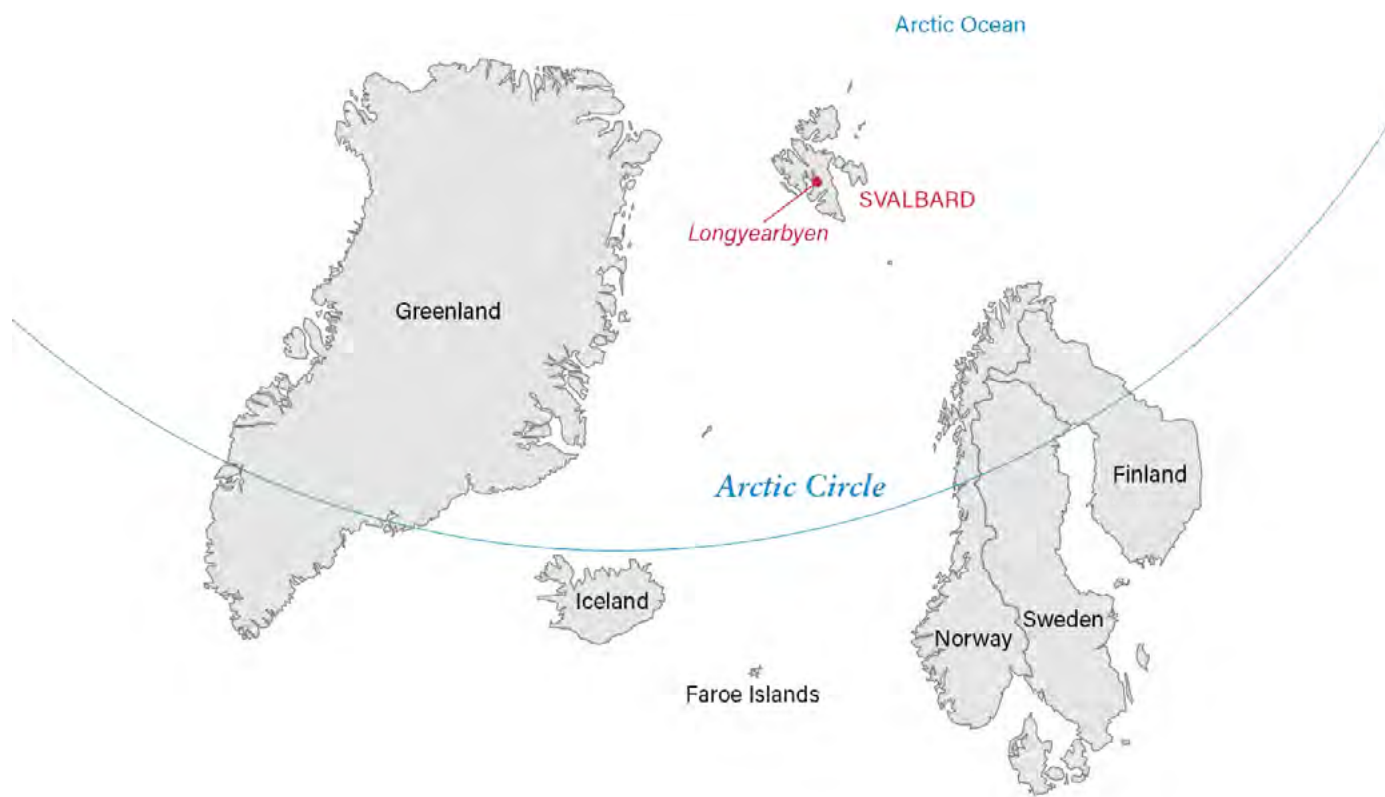




SVALBARD

12 – 19 & 18 – 25 April 2026



SVALBARD

Norway

High in the northern latitudes, Svalbard is an Arctic wilderness that few will ever experience – especially on skis or snowboard. April and May is the ideal time for ski touring as the sea ice breaks up to allow access, the long nights give way to the midnight sun, the snow remains well preserved with fresh snowfalls still likely.

With several comfortable, ice rated vessels available to navigate this pristine and largely untouched region, there is no better way to admire the incredible Arctic wildlife and leave fresh tracks on the mountain face that rises above the dark waters of the Arctic Ocean.

KEY FACTS

Season

APRIL / MAY

Terrain

ALPINE, GLACIATED

Base height

0 METRES

Highest peak

1,713M (NEWTONTOPPEN)

Average number of runs per day

2

Average run length

900 VERTICAL METRES

Group size

4 — 12

International / domestic flights

OSLO & LONGYEARBYEN



■ PURE UNTOUCHED TERRAIN

Due to its remote location within the Arctic Circle and the harsh conditions that prevail for most of the year, much of Svalbard's terrain remains unexplored and rarely accessed.

■ SUMMIT TO SEA SKIING

Ski touring in Svalbard starts right at sea level, with most peaks topping out around 1,000 metres — meaning altitude isn't a challenge and elevation gain is more easily earned than in many other mountain regions. The reward: breathtaking views of glaciated peaks rising straight up from the Arctic Ocean, and long, scenic descents right down to the shoreline.

■ ARCTIC SAFARI

In addition to its distinctive ski terrain, Svalbard offers an abundance of Arctic wildlife. Sightings of whales, walruses, seals, and a variety of bird species are common—and with some luck, you may catch a glimpse of the mighty polar bear.

■ UNBEATABLE VARIETY AND FLEXIBILITY

From steep couloirs and exposed ridgelines to wide open faces and glacial terrain, Svalbard offers an impressive variety of terrain. Paired with the mobility of an ice-rated vessel to chase optimal weather and snow, the possibilities for adventure are nearly limitless.



THE EXPERIENCE

The best time for ski touring in Svalbard is between mid-April and late May.

The mountain guides, ship's captain and polar guide work together to plan and adapt the itinerary according to current weather, snow, and sea ice conditions. Locations range from Svalbard's southern tip to the north coast, with ship passages undertaken whenever guests are not out skiing.

Our team of internationally certified (IFMGA) guides has led numerous successful expeditions to Svalbard. With a maximum of 10 guests and at least two guides per trip, we often have the mountains to ourselves.

Ski tours vary from gentle, low-angle outings to more demanding routes involving technical climbs and more challenging descents. Groups are matched by ability, fitness and expectations so everyone can enjoy the adventure safely and at a comfortable pace.

When not skiing our vessels provide excellent opportunities to observe wildlife while underway and at anchor - your polar guide will bring the natural environment to life.

Watch the highlights of our Svalbard trip [here](#).

SKI TOURING / SPLIT-BOARDING ABILITY

Given Svalbard's remote location and the potential presence of polar bears along the shoreline, prior ski touring or split-boarding experience and a good level of fitness are essential.

At a minimum, participants should be comfortable with:

- Fitting and removing skins.
- Making kick turns on steeper slopes.
- Climbing for several hours at a steady pace.
- Descending in varied snow conditions with control.

Experience of using ski and boot crampons and ice axes is an advantage, but not essential.

ITINERARY & PRICING

Price: €11,500 per guest (10 total)

Trip dates: 12 – 19 April and 18 – 25 April 2026

Trips typically involve 1 night ashore in Longyearbyen with six to nine nights on board. All trips are tailored according to guest requirements meaning that dates and prices are “on request”. Prices vary depending on choice of vessel and other variables.

ITINERARY

- Day 0:** Arrival.
Evening flight to Oslo, overnight stay in the city.
- Day 1:** Journey North.
Fly from Oslo to Longyearbyen. Spend the afternoon and evening exploring the town.
- Day 2:** Pre-Embarkation Adventure.
Optional morning activities such as ski touring, snowmobiling, or fat-biking. Embark in the afternoon and begin the first sea passage.
- Day 3 – 6:** Ski Touring & Exploration.
Full days of ski touring with passages between locations, exploring the remote Arctic terrain.
- Day 7:** Final Ski & Return.
Final day of ski touring. Return to port and spend the last night on board the vessel.
- Day 8:** Departure.
Disembark in Longyearbyen and fly back to Oslo, with onward connection to your international destination.

INCLUDED IN THE PRICE

- 1 night pre-charter B&B hotel accommodation (twin / double occupancy) in Longyearbyen.
- 6 nights’ full board accommodation (shared cabin) on RV PolarXplorer.
- Guiding in two groups of 5 or 6 with internationally certified (IFMGA) ski guide(s).
- Fuel is allocated to cover the anticipated cruising distance. If conditions allow for extended travel beyond the original itinerary, any additional fuel costs will be discussed with and approved by guests before proceeding.
- Transfers between Svalbard airport and Longyearbyen and to / from expedition vessel.

NOT INCLUDED THE PRICE

- International / domestic flights.
- Insurance – specialist insurance required.
- Additional hotel nights.
- Activities in Longyearbyen.
- Pre / post-charter excursions in Longyearbyen.
- Skiing / snowboarding equipment and avalanche and glacier safety kit.
- Alcoholic drinks on charter vessel.
- Gratuities.
- Anything else not mentioned.

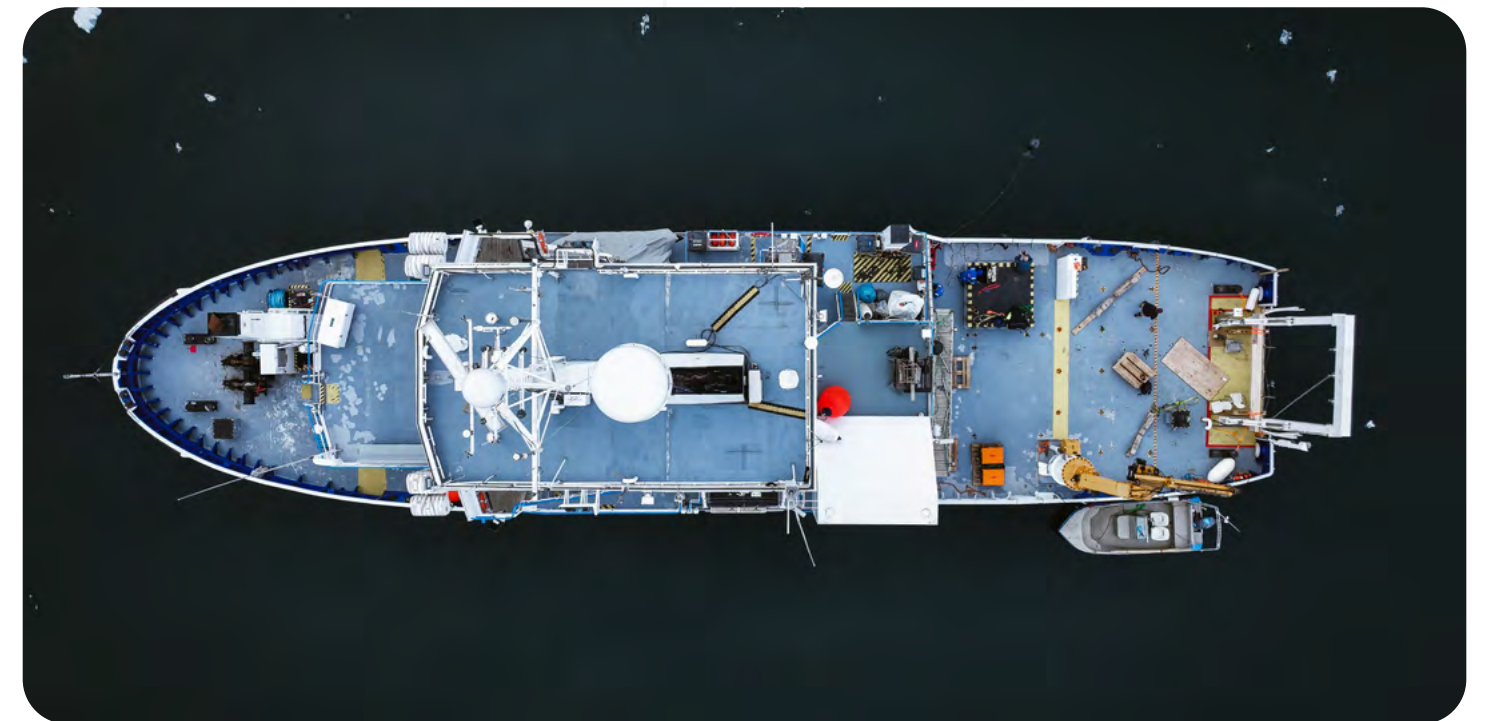
- A 30% non-refundable deposit and completed booking form will be required to hold the vessel. Your booking will be confirmed once we issue a confirmation invoice.
- Insurance covering you for medical expenses is a pre-requisite and should be arranged as soon as you book the trip. Given the remote location and requirements of the Svalbard governor for all participants to have evacuation cover, Global Rescue Travel membership is also a requirement and participants will be asked to share proof of membership at least one month prior to departure.



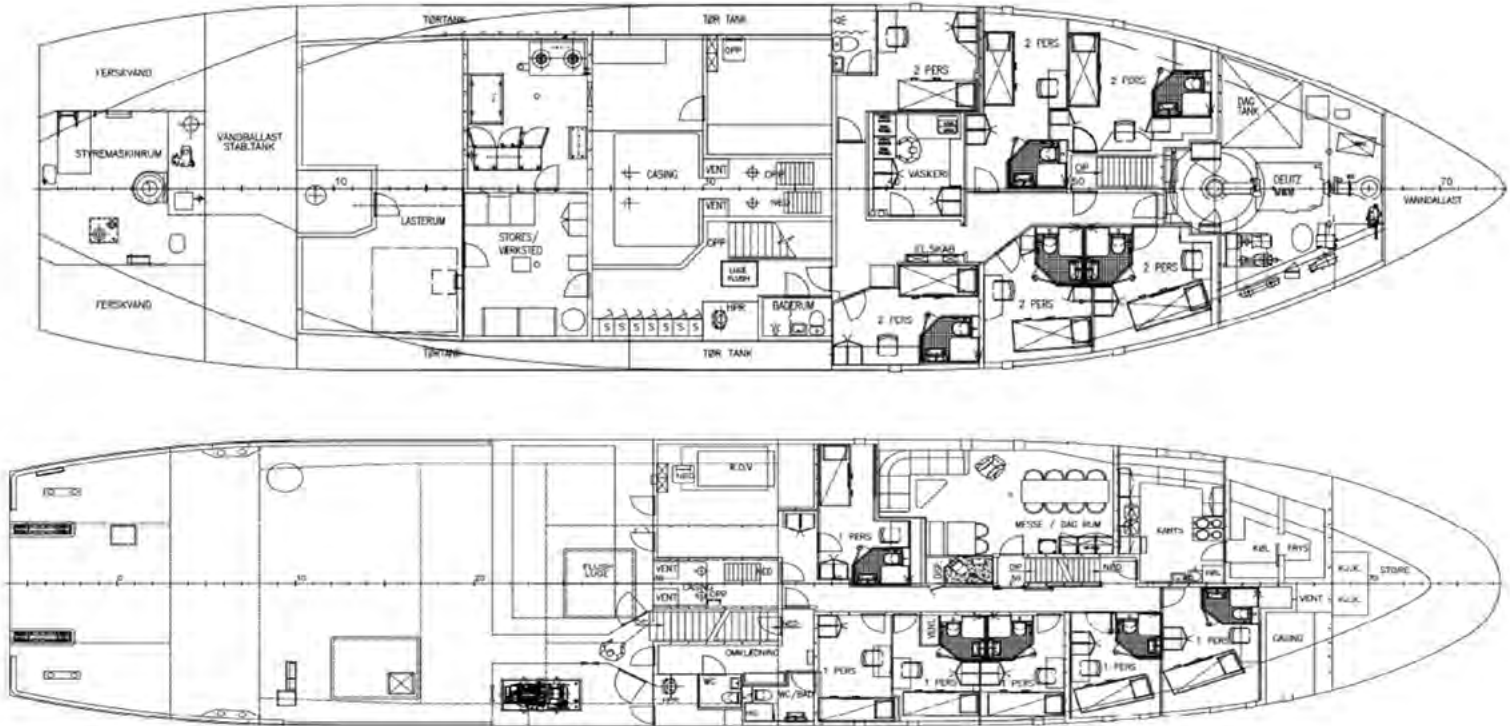
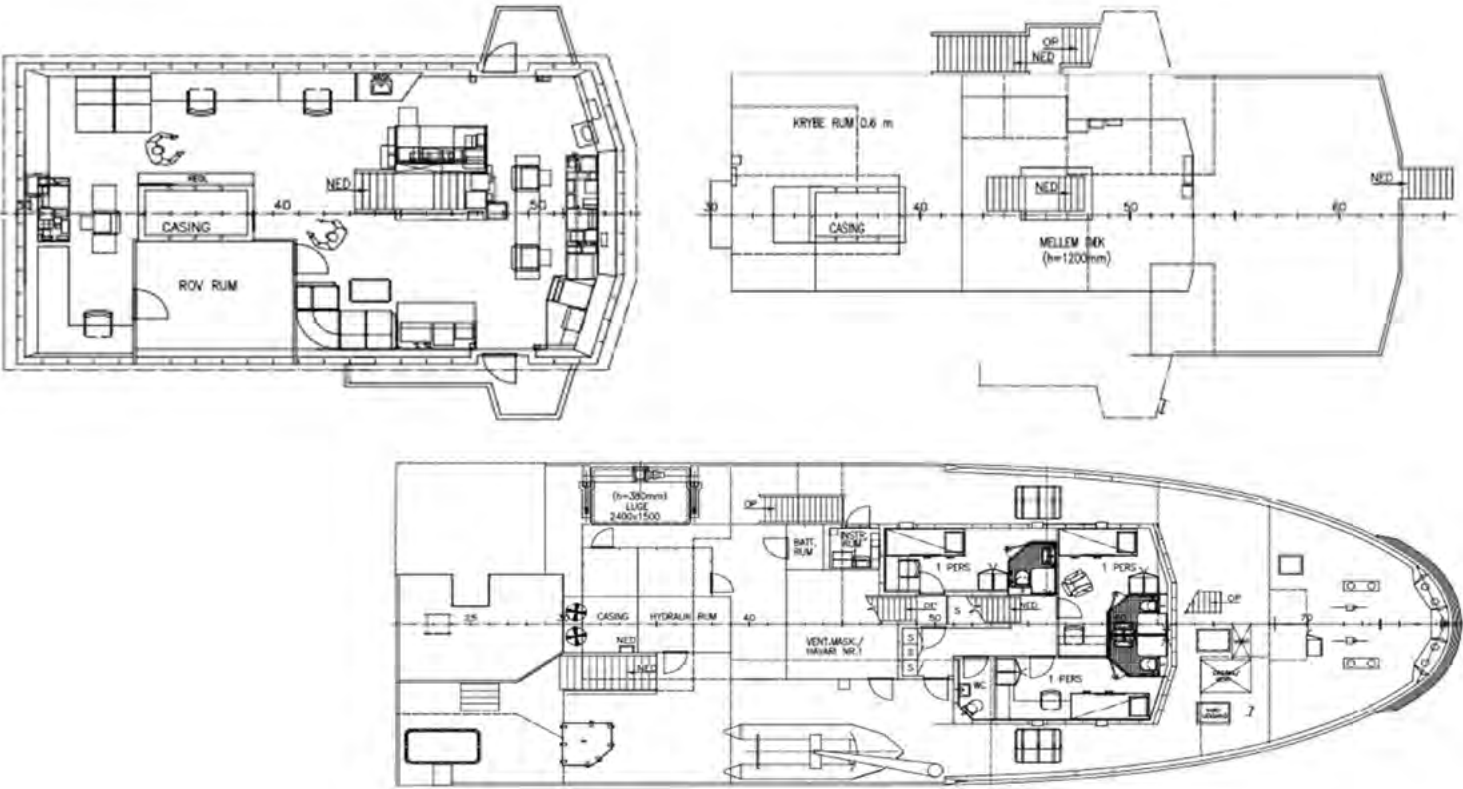
THE VESSEL

RV PolarXplorer is the ideal vessel for exploring Svalbard and has an impressive history of supporting arctic research and television and film productions. She was refitted in 2022 with new interior and a completely overhauled technical system. She provides maximum safety and versatility to crew and guests. The aft deck with heavy lifting cranes allows for safe launching of large tenders.

- Viewing from the bridge.
- Hot tub on deck.
- Zodiac tenders.
- Single and bunk cabins, all with en suite shower and wc.
- Generous storage for ski gear.
- Expert chef to prepare all meals and adapt to specific dietary requirements.
- Polar guide to make this as much a polar adventure as a ski trip.



DECK PLAN



SPECIFICATION

Length	42.2 m
Beam	10 m (33 ft)
Guest berths	10
Facilities	Gym & large storage room, hot tub
Cruising speed	10 knots
Ice Rating	1C
Zodiacs	1

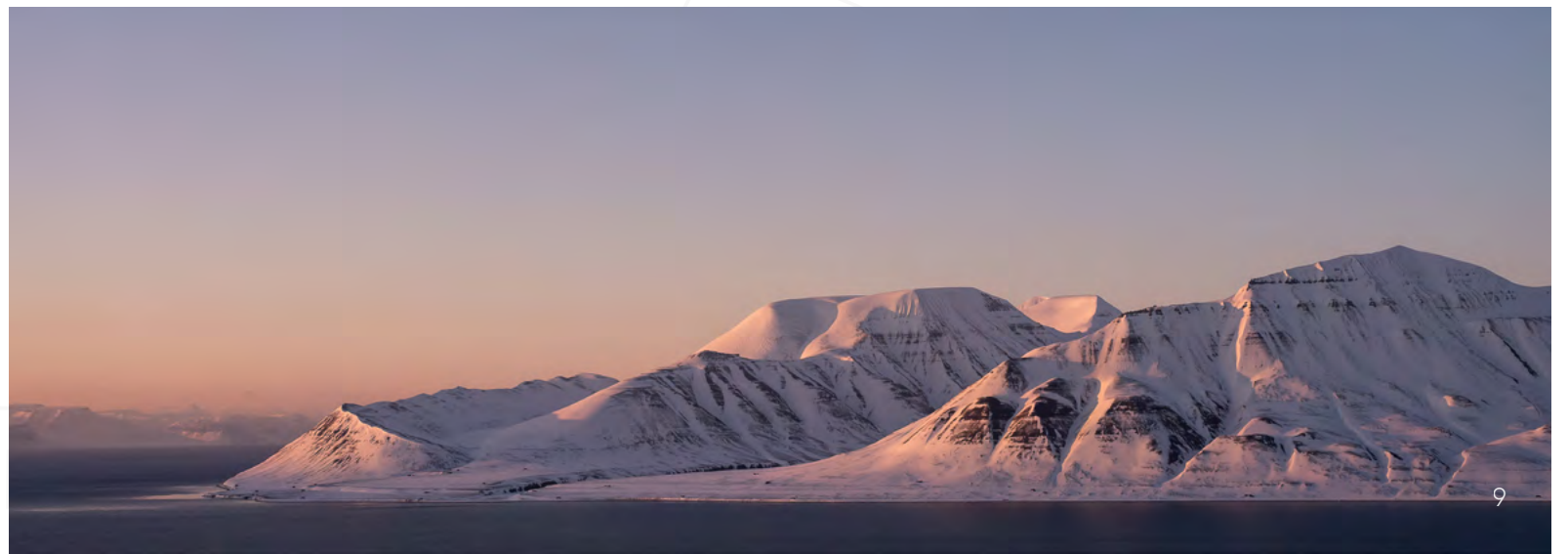


ABOUT LONGYEARBYEN & SVALBARD

Longyearbyen, the world's northernmost settlement, is a remarkable outpost with a rich heritage in polar exploration, Arctic research, and mining. Located at 78° North in the Svalbard archipelago, it offers front-row seats to extraordinary natural events such as the midnight sun, polar night, and the Northern Lights. Home to around 2,400 residents involved in research, conservation, mining, and defence; the town also welcomes a growing number of visitors. Longyearbyen offers a good range of amenities, including hotels, shops, bars, restaurants, two museums, and its own brewery. Snowmobiles and huskies are just as numerous as people, with snowmobiling and dog sledding being popular ways to explore the Arctic landscape.

Svalbard's diverse wildlife is a major draw for visitors, with regular sightings of whales, walruses, Arctic foxes and reindeer. Although polar bears outnumber people, they are more elusive — there is nonetheless an ever-present potential for sightings (and need for caution) outside the main settlements.


In late spring, when the sea ice retreats and snow still reaches the coastline, vessel-based travel offers unmatched access to Svalbard's remote and untouched landscapes. Combined with a stable maritime snowpack and the magic of the midnight sun, this makes for exceptional ski touring conditions and a truly unique Arctic experience.



WATCH THE HIGHLIGHTS OF OUR SVALBARD TRIP





A skier in a bright yellow jacket is descending a steep, snow-covered mountain slope. The skier is positioned on the right side of the frame, leaving a trail of snow behind them. The background features a vast, flat expanse of water, likely a fjord or a large lake, with several small ice floes scattered across its surface. In the distance, more snow-capped mountain peaks are visible under a clear, deep blue sky. The overall scene conveys a sense of adventure and pristine natural beauty.

I am confident that anything James Morland and his company takes responsibility for will not merely be excellent, carefully planned and well executed but will have that indefinable quality of soul which is rare to find and makes all the difference.

– *Simon Olswang*

TERMS AND CONDITIONS

The provider of your trip

The "trip" is organised by Elemental Adventure ("the Organiser" / "Us") for its Clients (the "Guest"/"You") and the charter of RV PolarXplorer ("the Vessel") is operated by PolarX ("the Operator") on an "exclusive charter" or "shared charter" basis.

Booking

In order to reserve a place, a completed booking form and 30% non-refundable deposit are needed. The booking will be confirmed when Elemental Adventure issues a confirmation invoice. Other related arrangements including but not limited to flights to Longyearbyen should not be booked until the booking has been confirmed by Elemental Adventure.

The final balance payment of 70% will be due 150 before departure. All payments are non-refundable in the event of cancellation by the Guest and, in the event that the balance payments are not made on time, it will be assumed that you wish to cancel, forfeiting payments made to date.

Cabins

Cabins will be assigned by the Organiser at the time of departure.

Minimum numbers

Due to the nature of the trip, in the event that minimum numbers are not reached, the trip may be cancelled by the organiser up to 6 months prior to departure. In this event, your deposit will be refunded to you.

Prices and surcharges

The price is fixed in Euros. Payments made in any other currency will be invoiced at the rate of exchange on the day your final invoice is sent using the interbank rate minus 1.2%.

The price will remain fixed from the date the confirmation invoice is issued. The Organiser reserves the right to apply a surcharge in the event of changes in taxes or fees on travel services imposed by third parties.

Insurance

Obtaining appropriate and adequate travel insurance is a condition of booking. In particular, it is your responsibility to ensure that your cover is adequate for a trip of this value and does not exclude ski-touring as an activity. Global Rescue Travel Membership is an additional requirement for the duration of the time on board RV PolarXplorer for all participants, regardless of any other evacuation cover they may have in place.

Arrival of Guests and baggage in Svalbard

It is the responsibility of the Guest to ensure they arrive in Longyearbyen, with their luggage, in good time for embarkation because there is no provision for rental or purchase of skiing equipment in Longyearbyen, nor is it possible to transport passengers or bags from the airport to RV PolarXplorer once she has left port. Because baggage delays to Longyearbyen are not uncommon, it is essential to keep as much of your essentials in hand luggage as possible and to arrive the day before embarkation. RV PolarXplorer will not delay her departure from Longyearbyen unless all passengers' arrival is delayed, so late arrival of you and/or your luggage could result in you missing the entire charter or being unable to ski.

Change of vessel, itinerary and programme

In the unlikely event that RV PolarXplorer should not be available to operate the Charter for any reason (including but not limited to adverse weather, technical problems, sale of the vessel), the Organiser reserves the right to substitute RV PolarXplorer with another vessel or vessels to fulfil the trip. If a reasonable alternative cannot be arranged, this will be considered cancellation by the Organiser.

The Captain and the Ski Guides will agree the Vessel's itinerary (including trips ashore made by tender) but the Captain, as the representative of the Operator, will have the final say on this may have to adapt or curtail it depending on weather or other conditions.

The Ski Guides will determine the skiing programme ashore based on weather and snow conditions and the composition of the groups. While they will make every effort to lead daily ski tours on all five days, the nature of this location and trip mean that tours are subject to variation or cancellation. In any event, variation or cancellation of skiing will not give rise to any refund.

Cancellation by the Organiser

In the event that the trip is cancelled by the Organiser at any point prior to departure for any reason other than a Force Majeure event, all payments made by each Guest will be refunded in full by the Organiser within 30 days of notifying the Guests. Cancellation by the Organiser as a result of a Force Majeure event will not result in a refund of payments made. In any event, the Organiser's liability to you in case of cancellation by us will not exceed the total monies paid to us for the trip, so it is essential to ensure you have insurance for any ancillary costs incurred.

Cancellation by the Guest

If you need to cancel your booking, you should do so in writing to the Organiser. Payments already made will not be refunded, but if the trip can be re-sold to other Guests at the same value, a credit for the amount recovered will be offered for a future trip from Elemental Adventure's portfolio.

TERMS AND CONDITIONS

Passport and visas

It is your responsibility to understand and to ensure that you have a valid passport (and visa if required) for entry, departure and travel to each country or region you visit on your trip. Your passport must be valid 6 months after the last date of travel with is as set out on your itinerary. You accept full responsibility for obtaining all such documents, visas and permits prior to the start of the trips, and you are solely responsible for the full amount of costs incurred as a result of missing or defective documentation. You agree that you are responsible for the full amount of any loss or expense incurred by us that is a direct result of your failure to secure or be in possession of proper travel documentation.

Acceptance of risk

You acknowledge that the nature of the trip may be adventurous and participation involves a degree of personal risk. You may be visiting places where the geographical attributes present significant dangers and physical challenges. We use information from government foreign departments and reports from our own contacts in assessing whether the itinerary should operate. However, it is also your own responsibility to acquaint yourself with all relevant travel information, including applicable health risks, and the nature of your itinerary. You acknowledge that your decision to travel is made in light of consideration of this information and you accept that you are aware of the personal risks attendant upon such travel. To the fullest extent permitted by law, we accept no liability in relation to these additional risks.

Limitation of liability

We are responsible for the proper provision of all travel services included in this trip. Subject to these Booking Conditions, if we or our suppliers negligently perform or arrange those services and we don't remedy or resolve your complaint within a reasonable period of time, and this has affected the enjoyment of your trip you may be entitled to an appropriate price reduction or compensation or both. You must inform us without undue delay of any failure to perform or improper performance of the travel services included in this package. Please note that it is your responsibility to show that we or our supplier(s) have been negligent if you wish to make a claim against us.

We shall not be liable for any damage or loss if the failure to carry out the contract is:

- a) attributable to you
- b) attributable to a third party unconnected with the provision of the services contracted for and the event is unforeseeable or unavoidable
- c) due to unavoidable and extraordinary circumstances beyond our control, the consequences of which could not have been avoided even if all due care had to be exercised
- d) Force Majeure (see below)

Except in cases involving death, injury or illness, any liability is limited to the price paid. In the case of damaged property, the liability is limited to a maximum amount equal to the amount paid by or on behalf of the owner of the property. In all cases we specifically exclude all liability for indirect or consequential loss or expense including loss of profits and in all cases our liability will be limited in accordance with and/or in an identical manner to the contractual terms of the companies that provide the transportation for your travel arrangements.

Our acceptance of liability in this clause is subject to assignment by you of your rights against any agent, supplier or sub-contractor which is in any way responsible for the unsatisfactory arrangements or your death or personal injury and you must provide us and our insurers with all assistance we may reasonably require.

Please note, we cannot accept any liability for any damage, loss or expense or other sum(s) of any description: (i) which on the basis of the information given to us by you concerning your booking prior to our accepting it, we could not have foreseen you would suffer or incur if we breached our contract with you; (ii) relate to any business, (iii) indirect or consequential loss of any kind.

Where it is impossible for you to return to your departure point as per the agreed return date of your package, due to "unavoidable and extraordinary circumstances", we shall provide you with any necessary accommodation (where possible, of a comparable standard) for a period not exceeding three nights per person. Because flights are not included within the arrangements provided by us, we cannot accept responsibility for any missed flights and any such claim should be directed to your travel insurer.

Force Majeure

Except where otherwise expressly stated in these Terms and Conditions, we regret we cannot accept liability or pay any compensation where the performance or prompt performance of our obligations under our contract with you is prevented or affected by or you otherwise suffer any damage, loss or expense of any nature as a result of "force majeure". In these Booking Conditions "force majeure" means any event which we or the supplier of the service(s) in question could not, even with all due care, foresee or avoid. Such events may include political disputes, acts of war, threat of war, riots, terrorist activity (actual or threatened), border closures, industrial action (actual or threatened), technical problems with machinery, transport or equipment, government intervention, natural disasters, fire or explosion, inclement weather and acts of God and all similar events outside our or our suppliers' control. Advice from the UK Government Foreign & Commonwealth Office to avoid or leave a particular country may constitute force majeure.

Applicable law

The laws of the England and Wales govern these Booking Conditions to the fullest extent allowable.